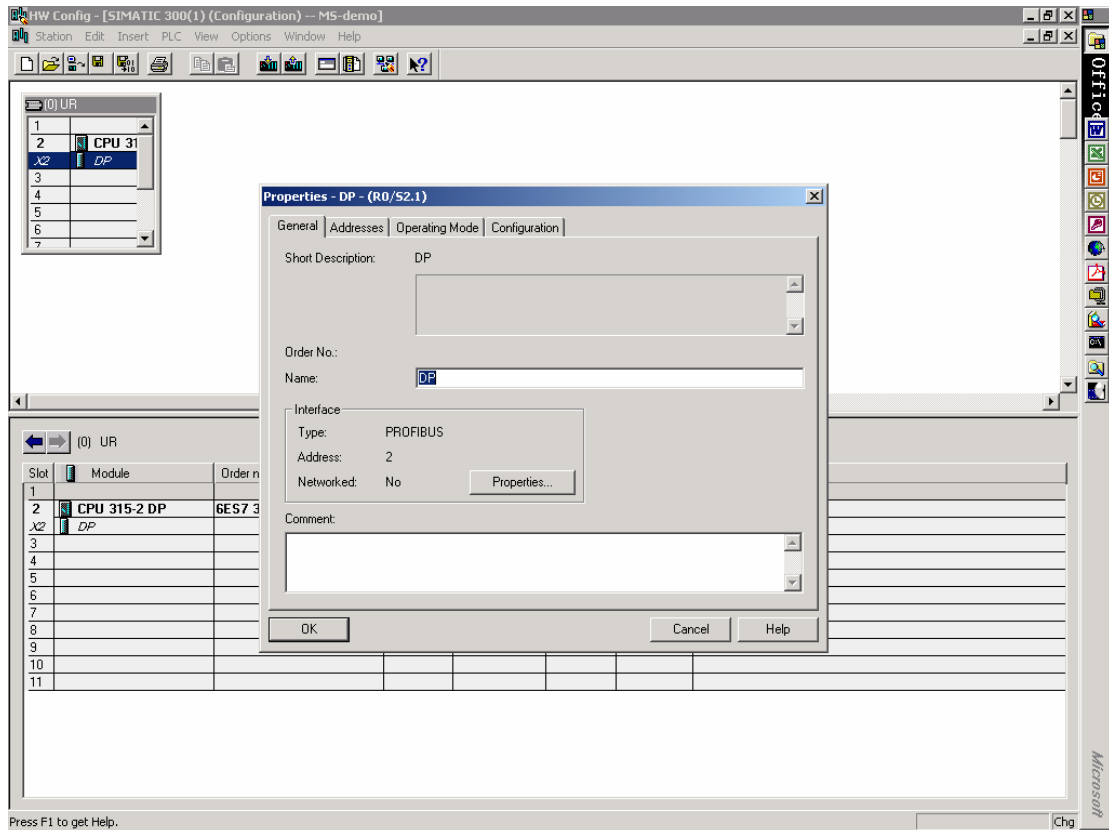
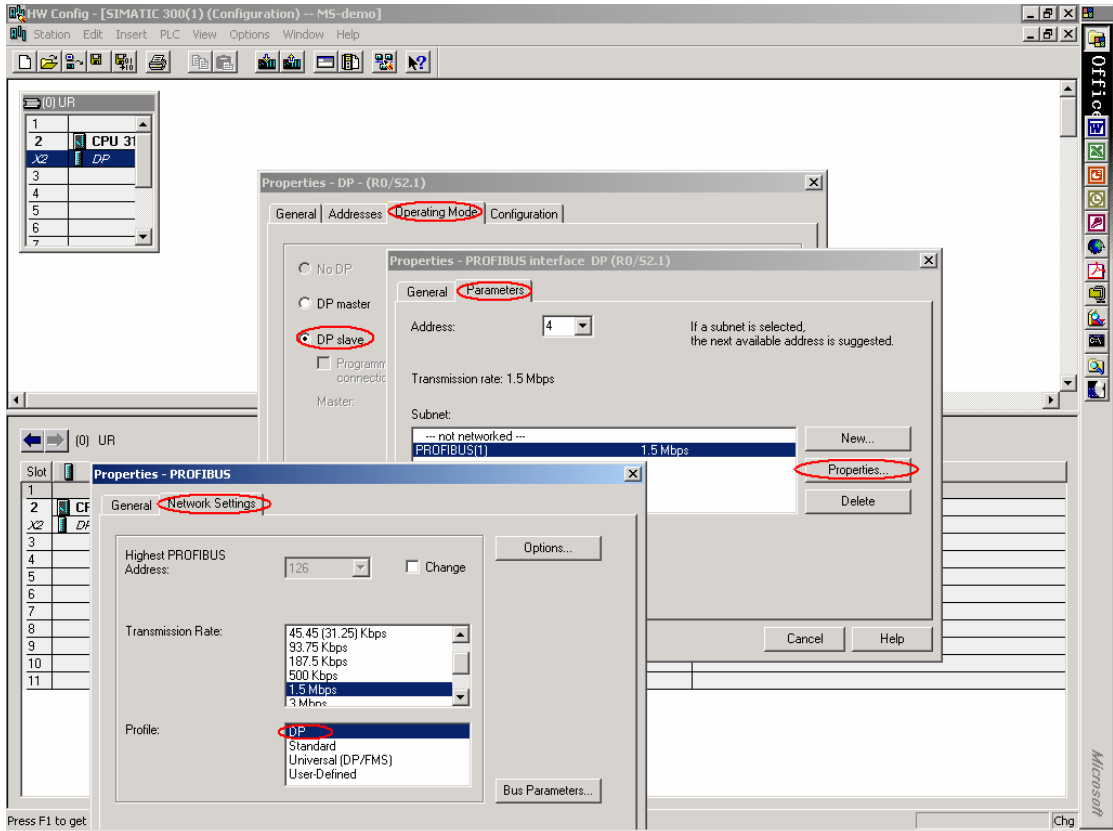


关于两个 CPU315-2DP 之间作主从(PROFIBUS-DP)的组态

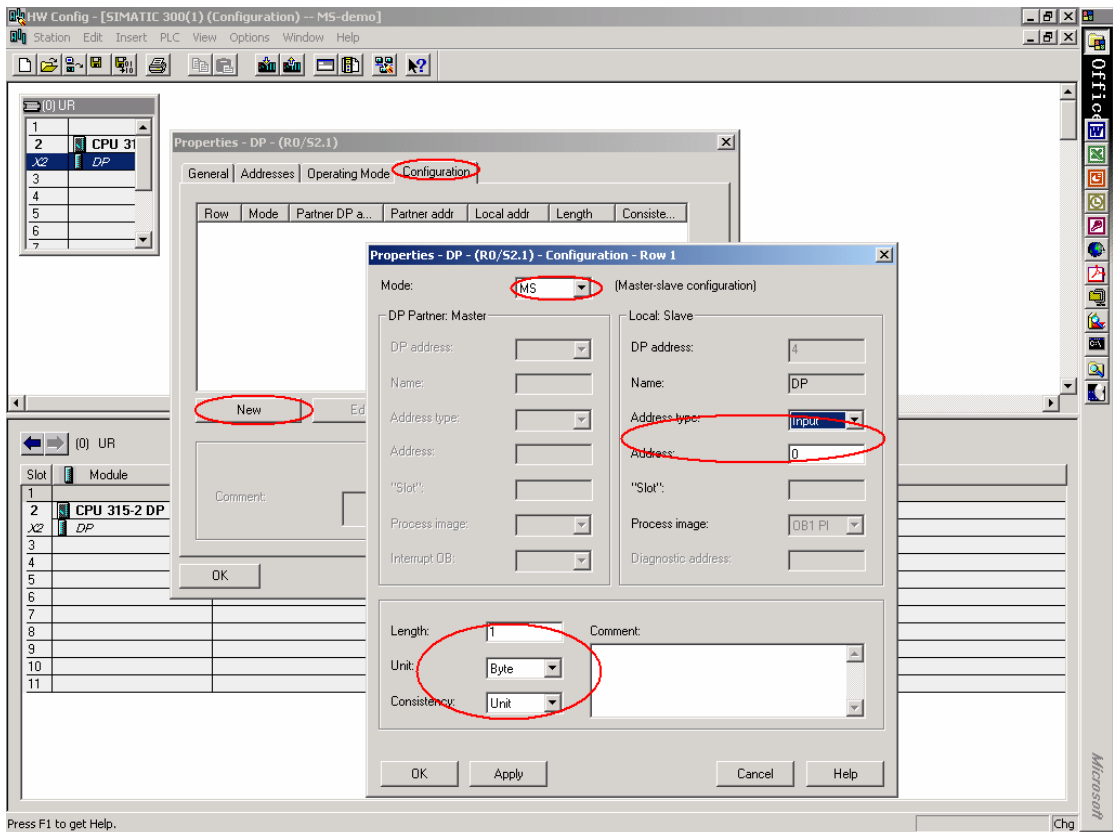
1. 先对从站进行组态:
打开硬件组态(HW), 配置如下:



在 DP Properties 对话框中选择 Operation mode 标签, 将 DP 属性设为从站(Slave) 并对其属性进行配置, 如 站址号, 波特率等.
配置页面如下:

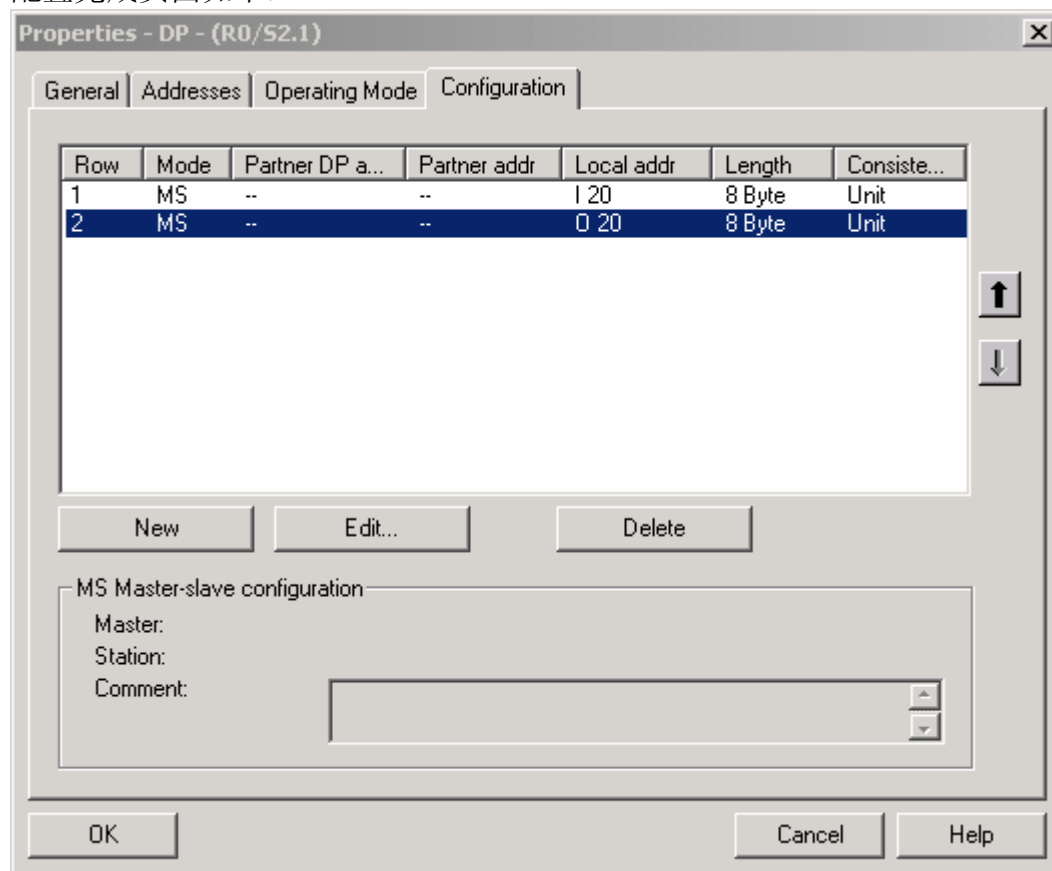


确认所有参数设定后, 回到 Properties-DP 对话框并选择 Configuration 标签, 对通讯数据区进行配置. 配置页面如下:



通过 NEW, EDIT , DELETE 标签可以添加, 编辑, 和删除所需的数据配置.

配置完成页面如下:



注意: 此时只能对本地数据(从站本身) 进行配置!

点击 OK 标签确认配置后, 编译并存盘从站的组态.

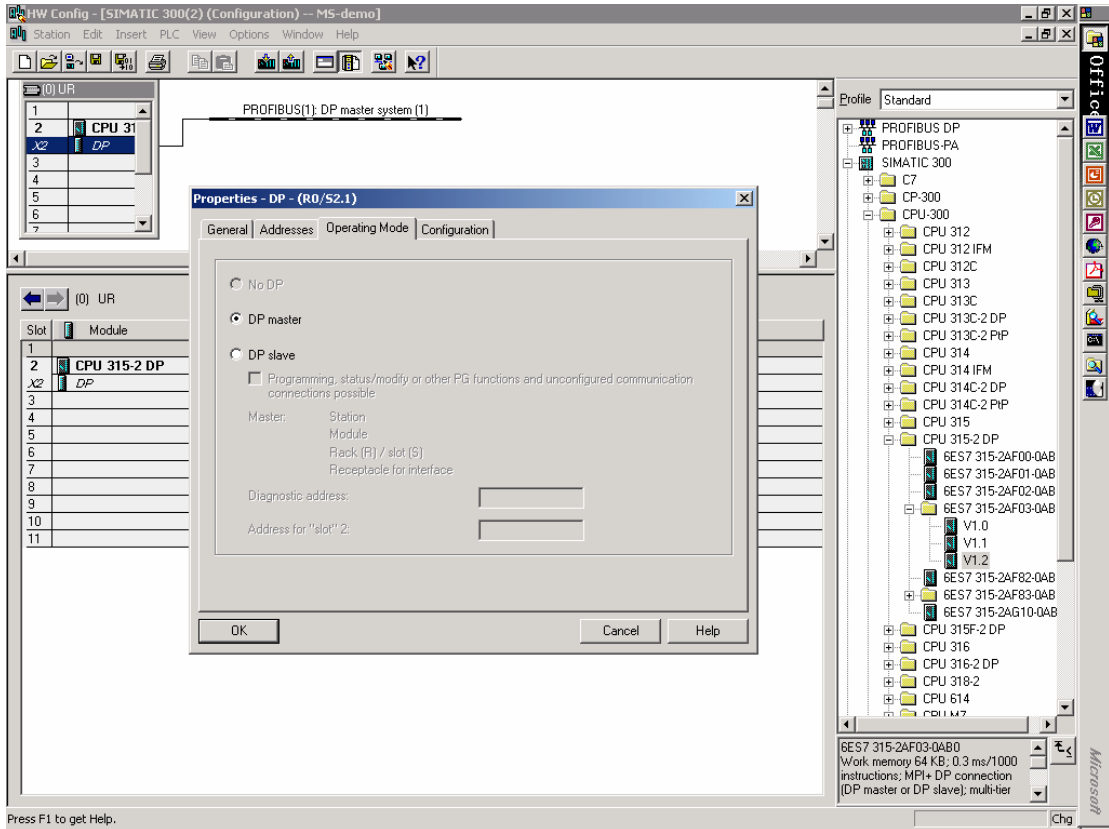
2. 对主站进行组态

结束从站组态配置后, 在同一项目下插入作为主站的 station, 并打开硬件组态对其进行配置.

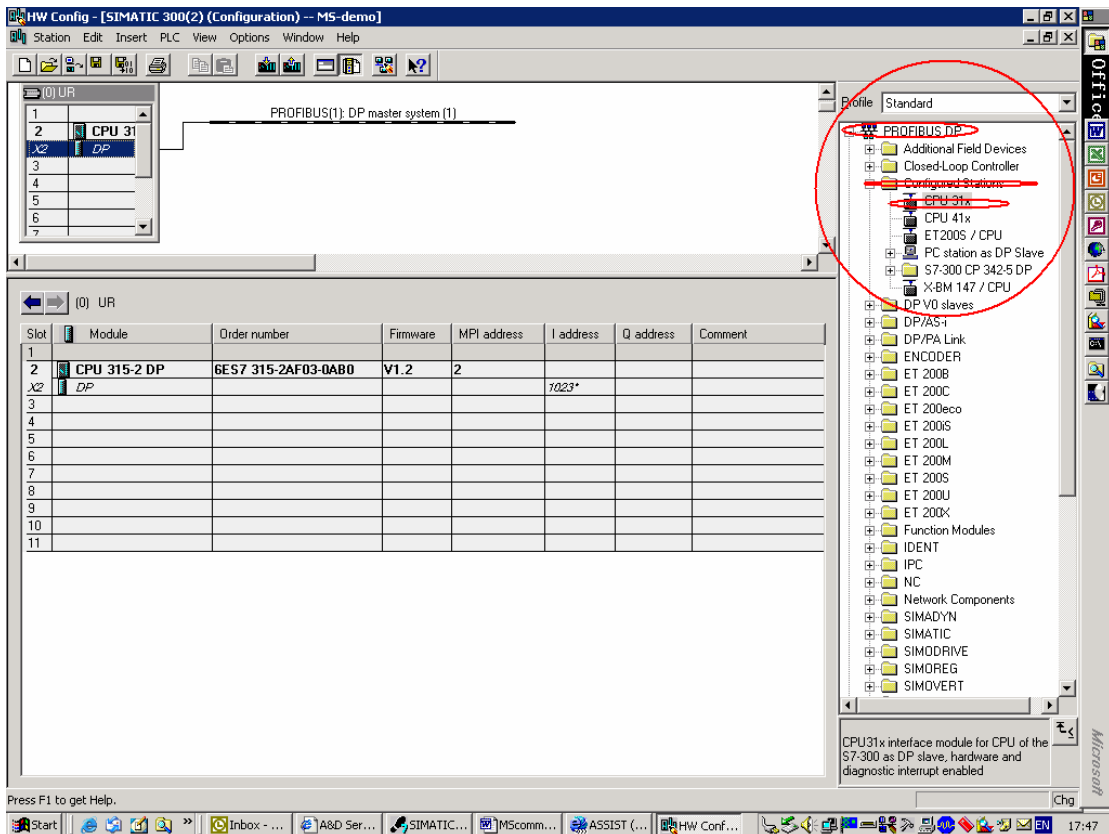
(1) 在 DP Properties 对话框中选择 Operation mode 标签, 将 DP 属性设为主站 (MASTER);

并对其它属性进行配置, 如 站址号, 波特率等.

配置页面如下:



点击 OK 确认后选择右侧 PROFILE 目录, 如图所示:



HW Config - [SIMATIC 300(2) (Configuration) -- MS-demo]

Station Edit Insert PLC View Options Window Help

PROFIBUS(1): DP master system (1)

Profile Standard

PROFIBUS DP

- Additional Field Devices
- Closed-Loop Controller
- Configured Stations
 - CPU 31x
 - CPU 41x
 - ET200S / CPU
 - PC station as DP Slave
 - S7-300 CP 342-5 DP
 - X-BM 147 / CPU
- DP V0 slaves
- DP/AS-i
- DP/PA Link
- ENCODER
- ET 200B
- ET 200C
- ET 200eco
- ET 200S
- ET 200L
- ET 200M
- ET 200S
- ET 200U
- ET 200X
- Function Modules
- IDENT
- IPC
- NC
- Network Components
- SIMADYN
- SIMATIC
- SIMODRIVE
- SIMOREG
- SIMOVERT

Microsoft

CPU31x interface module for CPU of the S7-300 as DP slave, hardware and diagnostic interrupt enabled

Insertion possible

Start Inbo... A&D... SIM... MSc... ASST... HW ... Image ima... 17:51

DP slave properties

General Connection Configuration

Configured Slave Controllers

Configured slave controllers can be connected to the PROFIBUS master. Select a slave and click "Connect":

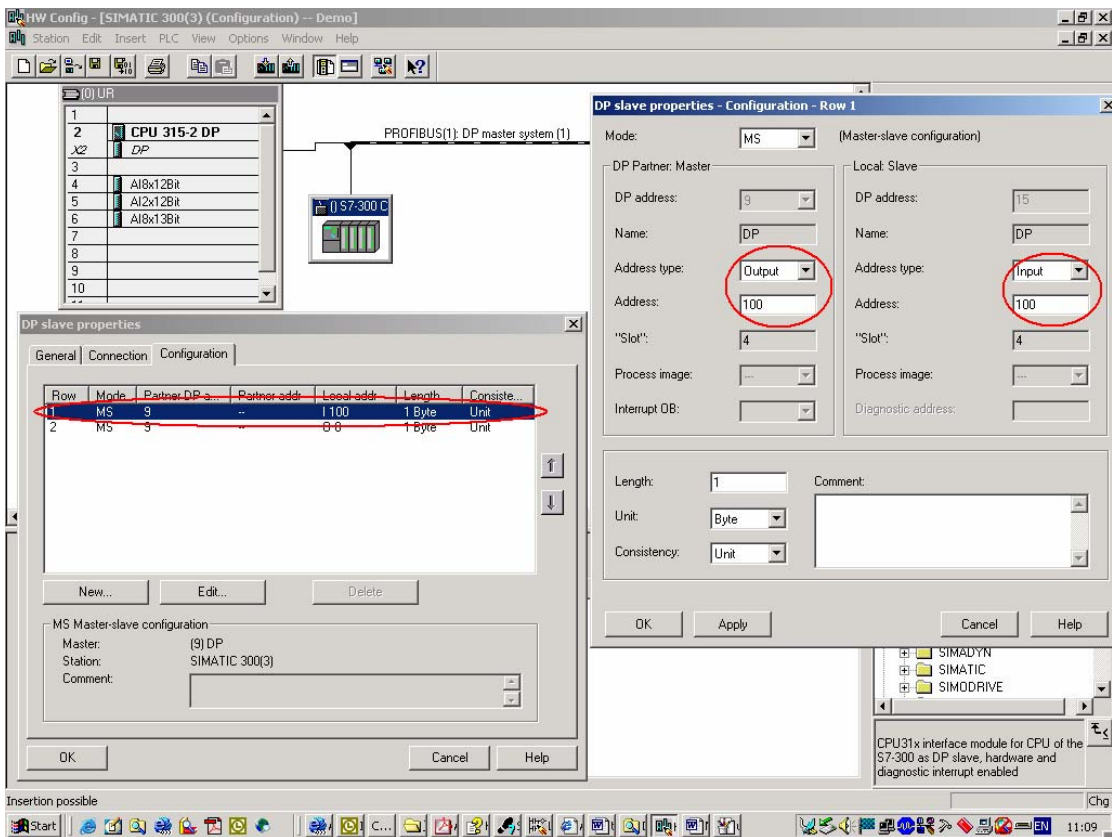
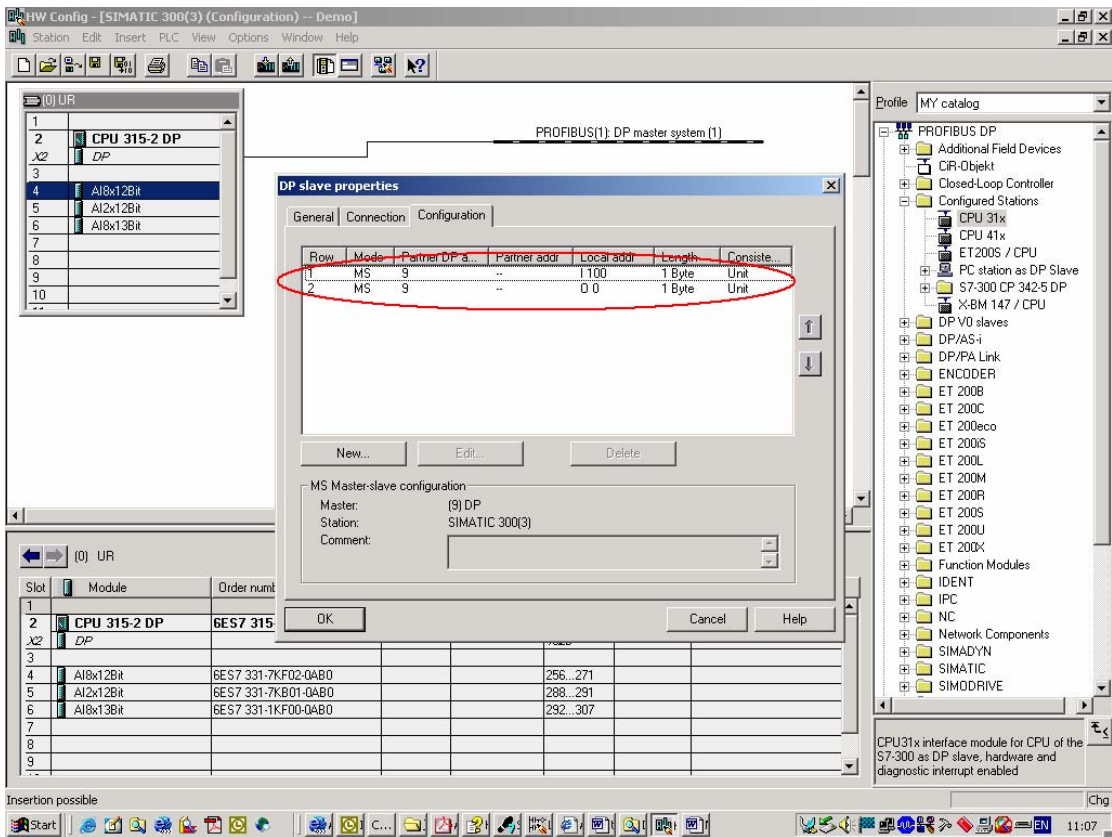
Slave	PROFIBUS	Address	in Station	Slot
CPU 315-2 DP	PROFIBUS(1)	4	SIMATIC 300(1)	0/2/1

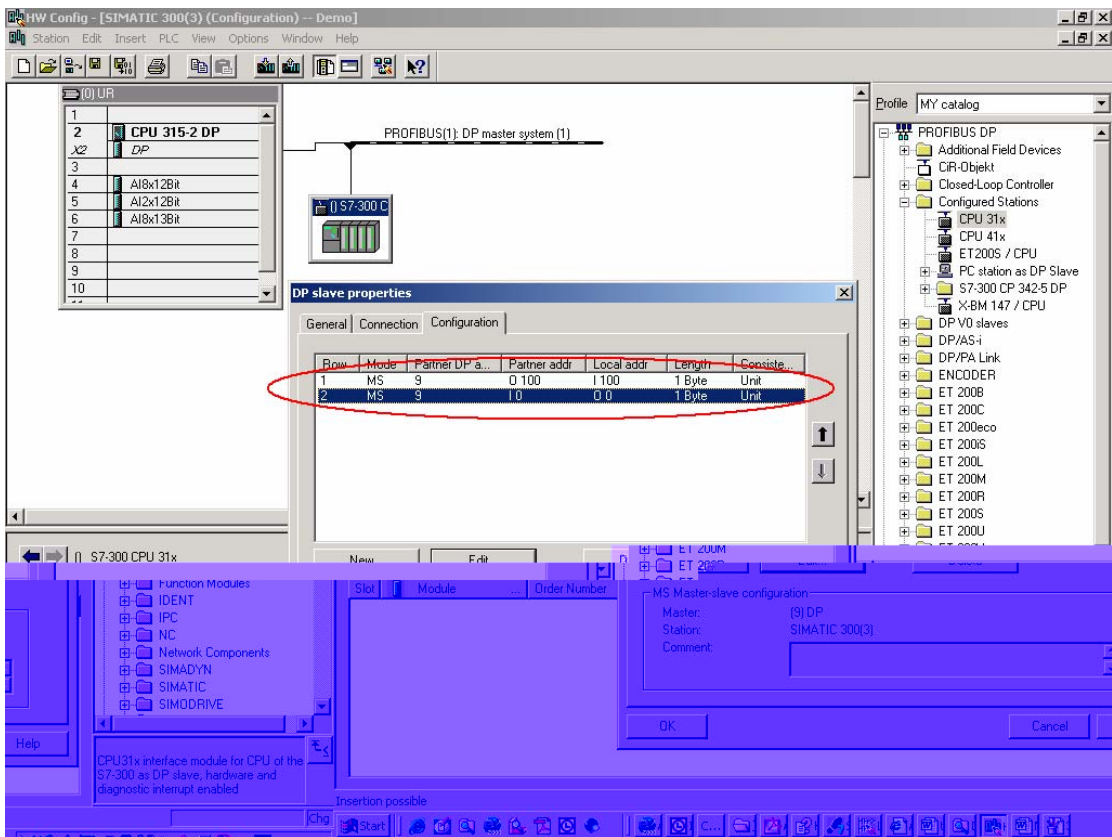
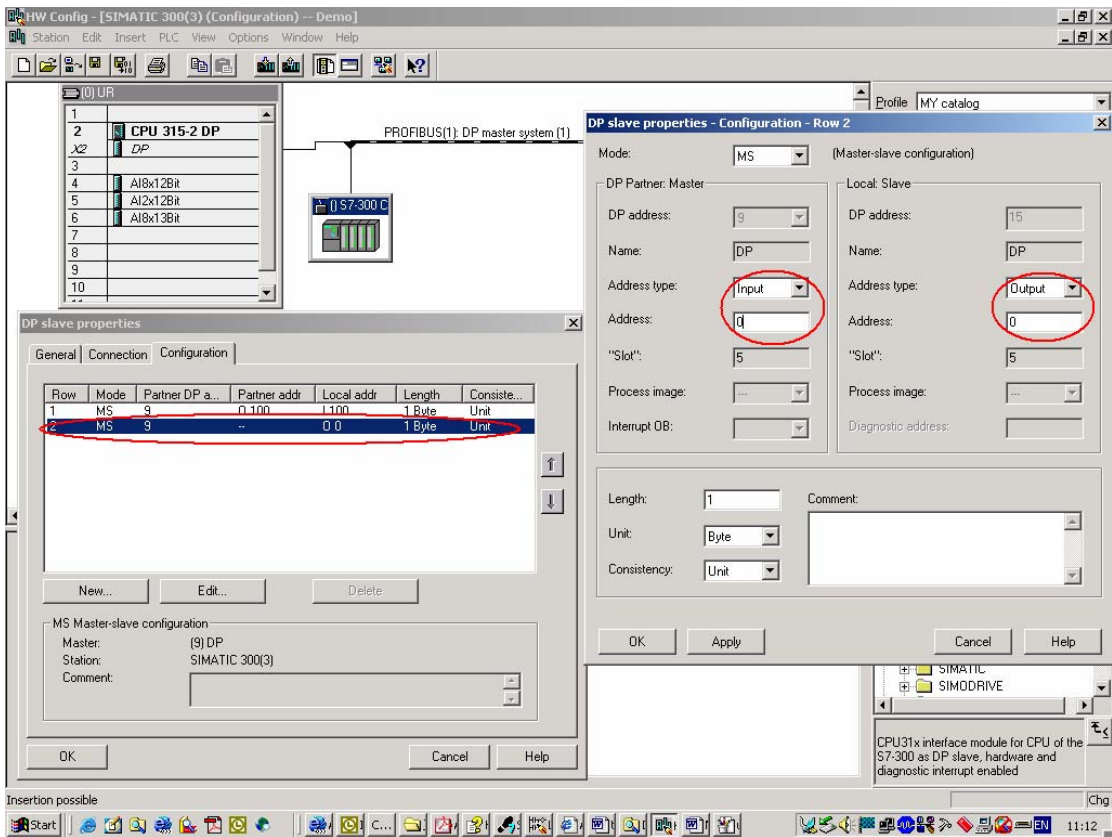
Connect

Active Connection:
<No Connection>

Disconnect

OK Cancel Help





至此，完成了 2 个 S7-315-2DP CPU 的主从配置！